

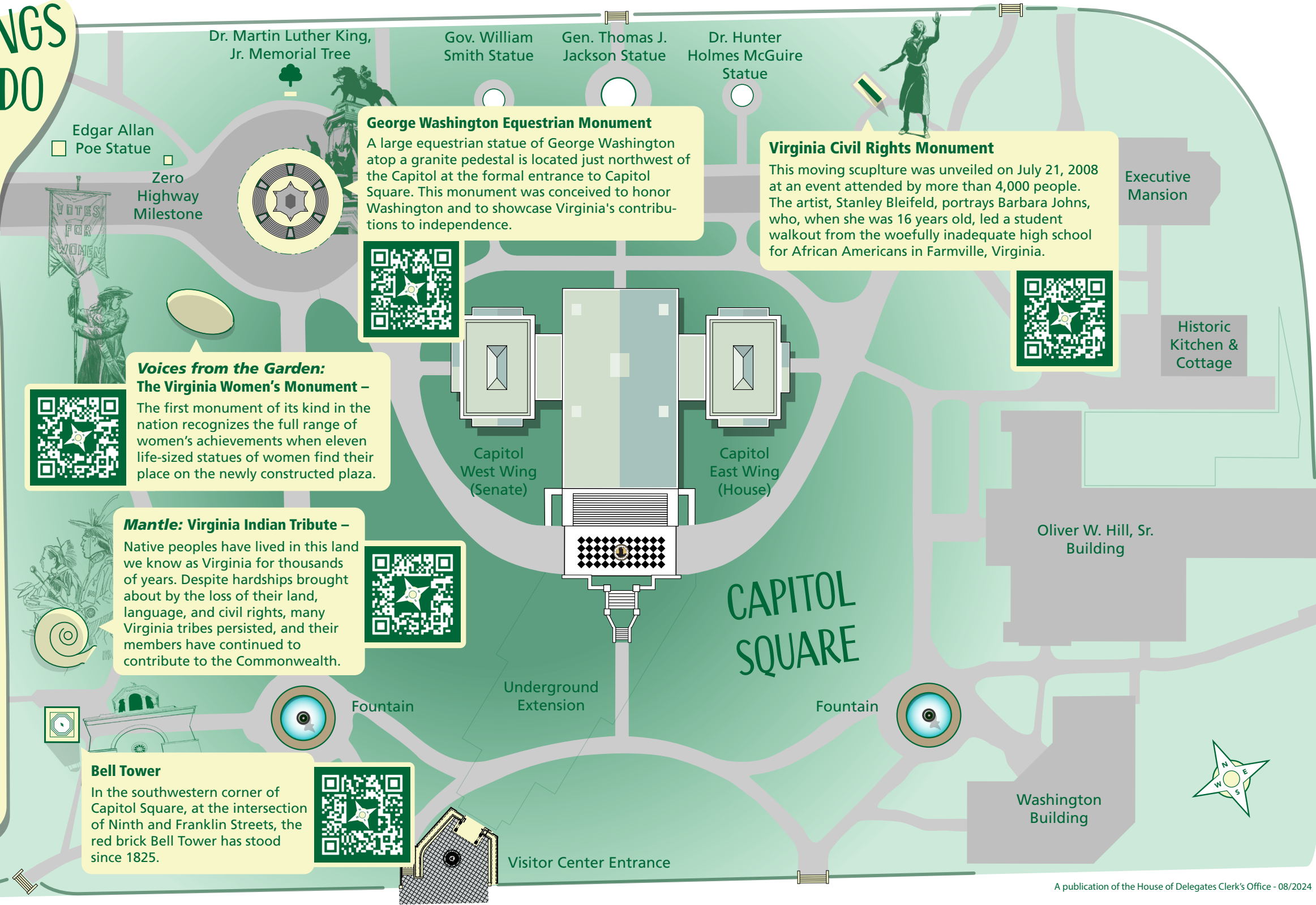
5 THINGS TO DO

Are you looking for a brief self-guided tour of highlights of the Capitol Building and its surrounding square?

The maps here, front and back, provide highlights of notable monuments, art, and statuary throughout Capitol Square for a unique educational experience.

Througout the maps are QR codes that can be scanned with your mobile device to learn more about the highlighted features.

Other landmarks and attractions are labeled for you to learn about and enjoy.



George Washington Equestrian Monument
A large equestrian statue of George Washington atop a granite pedestal is located just northwest of the Capitol at the formal entrance to Capitol Square. This monument was conceived to honor Washington and to showcase Virginia's contributions to independence.

Virginia Civil Rights Monument
This moving sculpture was unveiled on July 21, 2008 at an event attended by more than 4,000 people. The artist, Stanley Bleifeld, portrays Barbara Johns, who, when she was 16 years old, led a student walkout from the woefully inadequate high school for African Americans in Farmville, Virginia.

Voices from the Garden: The Virginia Women's Monument –
The first monument of its kind in the nation recognizes the full range of women's achievements when eleven life-sized statues of women find their place on the newly constructed plaza.

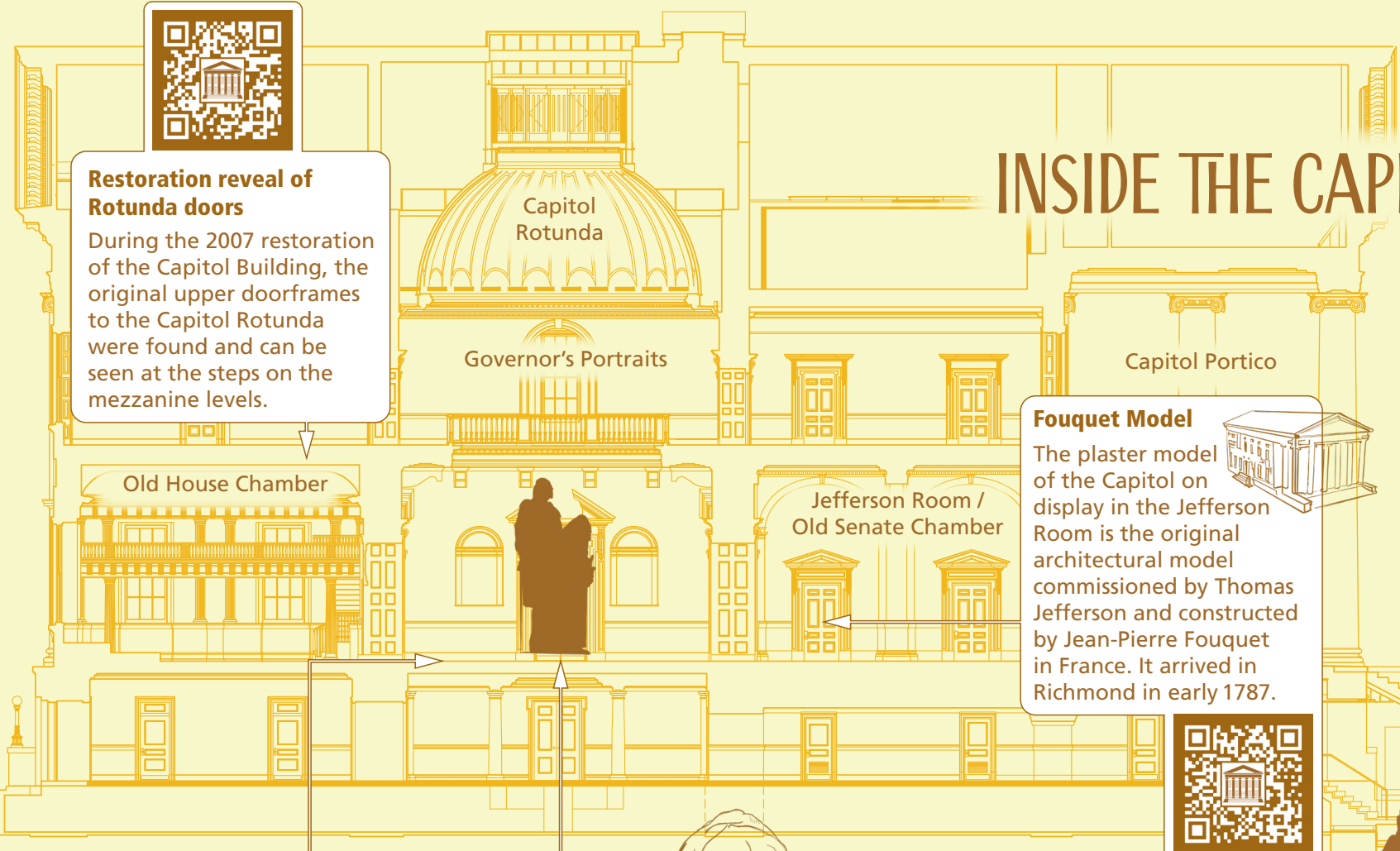
Mantle: Virginia Indian Tribute –
Native peoples have lived in this land we know as Virginia for thousands of years. Despite hardships brought about by the loss of their land, language, and civil rights, many Virginia tribes persisted, and their members have continued to contribute to the Commonwealth.

Bell Tower
In the southwestern corner of Capitol Square, at the intersection of Ninth and Franklin Streets, the red brick Bell Tower has stood since 1825.

5 THINGS TO DO



Restoration reveal of Rotunda doors
During the 2007 restoration of the Capitol Building, the original upper doorframes to the Capitol Rotunda were found and can be seen at the steps on the mezzanine levels.



INSIDE THE CAPITOL BUILDING

Fouquet Model
The plaster model of the Capitol on display in the Jefferson Room is the original architectural model commissioned by Thomas Jefferson and constructed by Jean-Pierre Fouquet in France. It arrived in Richmond in early 1787.



- ← 3rd Floor
- ← Mezzanine Level
- ← 2nd Floor
- 1st Floor
- To Capitol Extension / Visitor's Center

There is much to see in the Virginia State Capitol Building. Highlighted here are destinations for those wanting a brief self-guided tour of the historic building and modern extension.

Further details of notable monuments, art, and statuary throughout the Capitol also can be seen on guided Capitol Tours which occur every hour Monday through Saturday and Sunday afternoon.

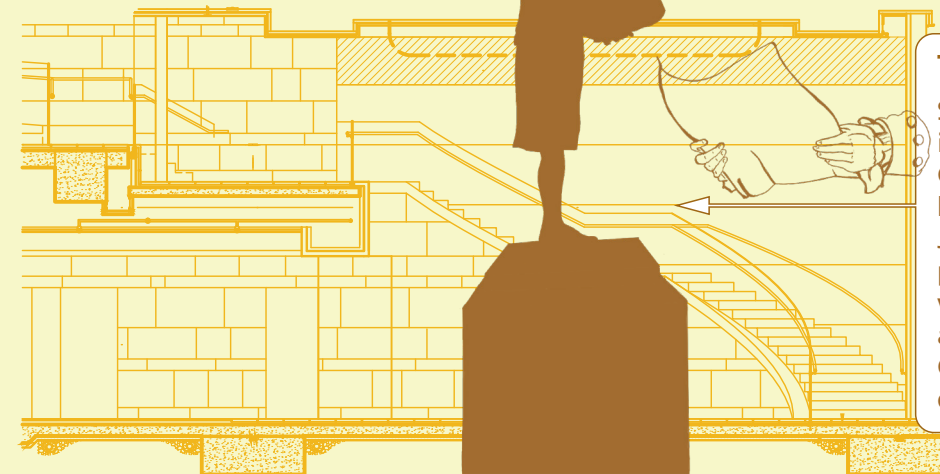
House and Senate Chambers
While the Capitol is historic, it also is a working building. The Virginia General Assembly is a bicameral legislature with a House of Delegates and Senate. Each meets in their respective chambers on the east and west sides of this National Historic Landmark.



Houdon Statue
A magnificent life-size marble statue of George Washington stands under an interior dome in the two-story Rotunda, located in the central portion of the Capitol. In June 1784, the General Assembly commissioned this statue "of the finest marble and best workmanship" as a tribute to Virginia's most respected citizen-soldier.



Capitol Extension / Visitor's Center



Thomas Jefferson Statue
Standing larger than life inside the plaza of the Capitol Extension, the bronze statue of Thomas Jefferson serves as a focal point and a welcome to visitors as they prepare to ascend to the historic Capitol building he designed.

